

# Introduction

Moderator

**Dr. Bryan Staley**

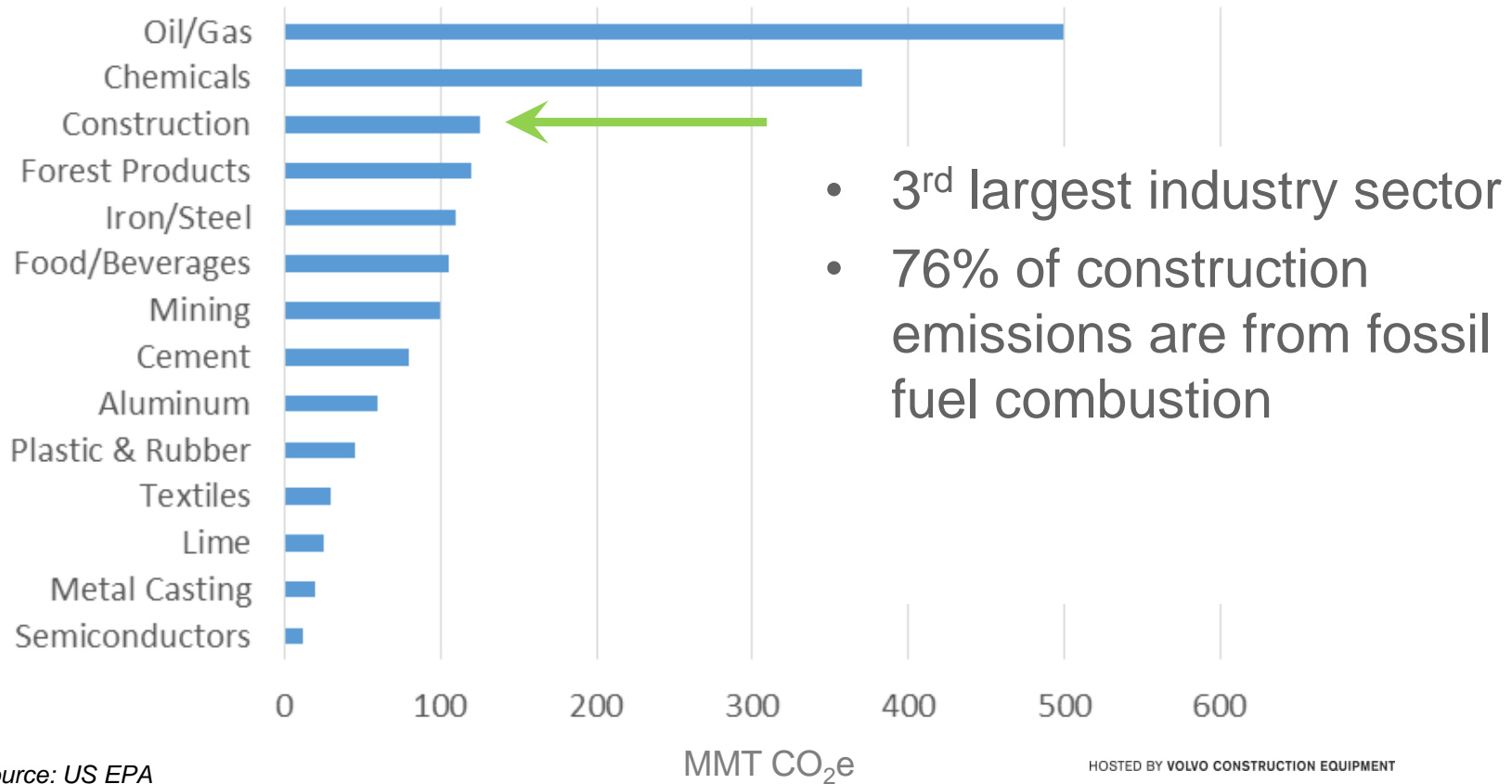
---

President and CEO of the Environmental Research  
and Education Foundation (EREF)

# Climate Challenges in Infrastructure Construction

---

# Emissions from Key Industries



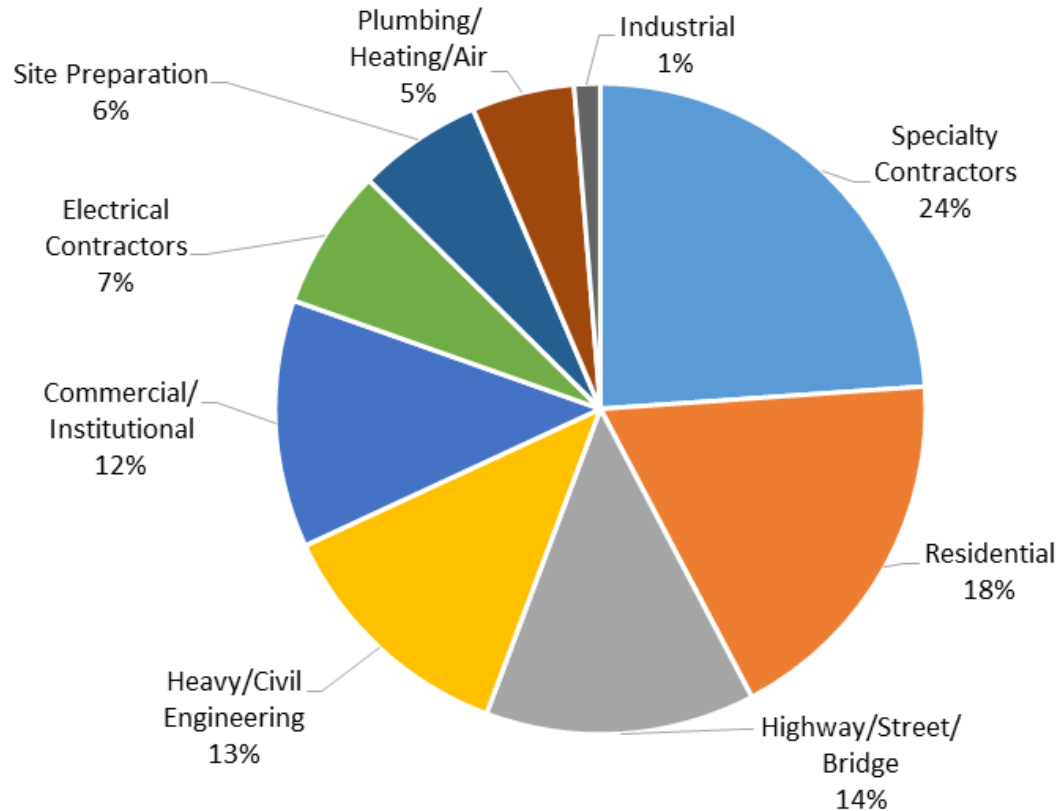
# Concept of Environmental Burden

- Natural Resources
  - Raw materials
  - Water
- Energy/Fuels
  - Quantity
  - Source (e.g. fossil, biofuel, wind, solar)
- Contaminants/Toxicity
  - Chemical compounds
  - Air pollutants

The diagram illustrates the concept of environmental burden. On the left, three categories are listed: Natural Resources, Energy/Fuels, and Contaminants/Toxicity. Each category has a blue arrow pointing towards a central grey rounded rectangle labeled 'Greenhouse Gas Generation'. The 'Natural Resources' arrow is a simple horizontal arrow. The 'Energy/Fuels' arrow is a thick L-shaped arrow that goes horizontally from the left and then turns vertically upwards. The 'Contaminants/Toxicity' arrow is also a thick L-shaped arrow that goes horizontally from the left and then turns vertically upwards, positioned slightly lower than the 'Energy/Fuels' arrow.

**Greenhouse Gas Generation**

# Construction Subsector Emissions



# OUR SCOPE

The scope of the CCC stretches the length of the construction industry's value chain across its life cycle:



- 1 Production of building materials
- 2 Infrastructure
- 3 Construction
- 4 Utilisation & Maintenance
- 5 Demolition
- 6 Recycling